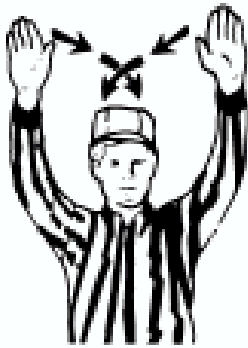
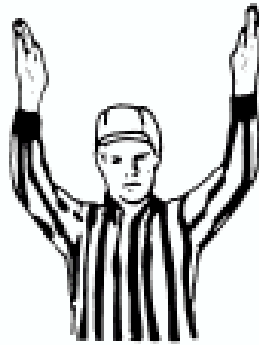


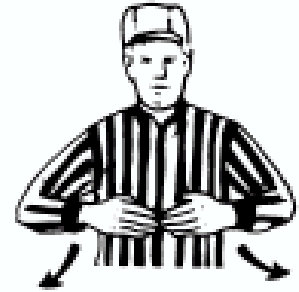
Procedural Signals



Time Out



Goal



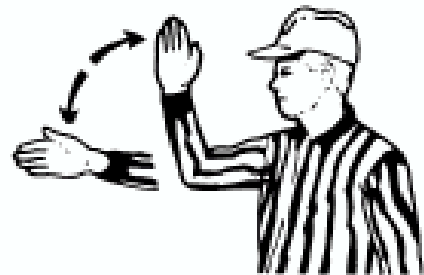
Face Off



Possession



No Goal



Out of Bounds
Direction of Play



Loose Ball



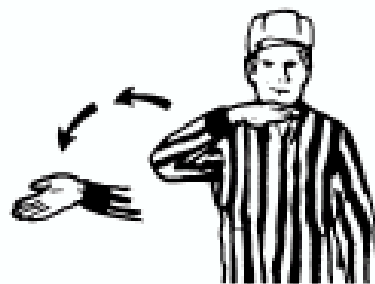
Simultaneous Fouls



Four Second Count



Stall Warning

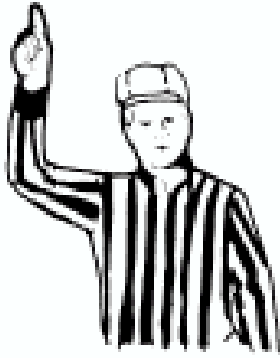


Re-entry of the Crease

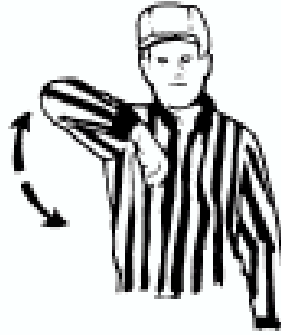


Play On

Personal Foul Signals



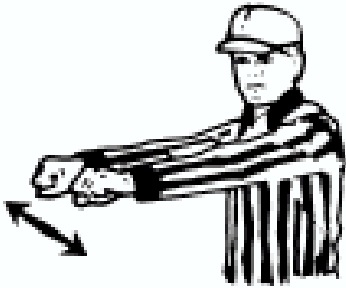
1 Minute



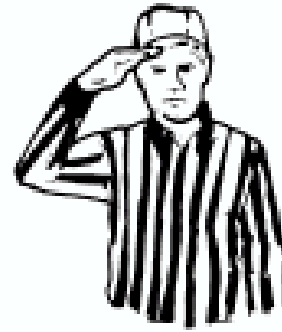
Illegal Body Check



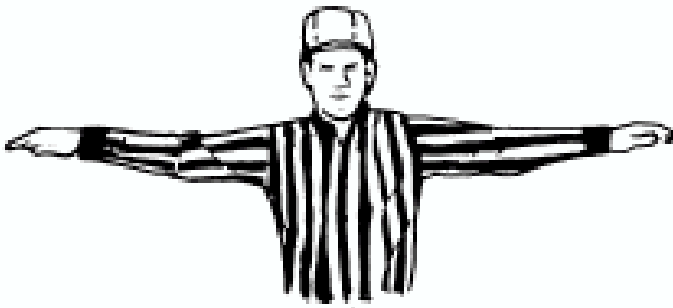
Slashing



Cross Check



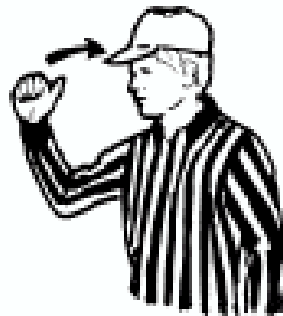
Unnecessary Roughness



Unsportsmanlike Conduct



Tripping



Expulsion

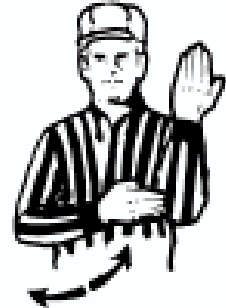
Technical Foul Signals



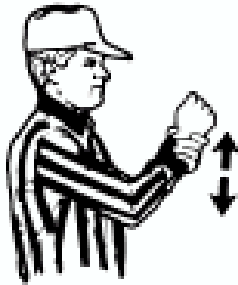
Tech Foul – 30 secs



Interference



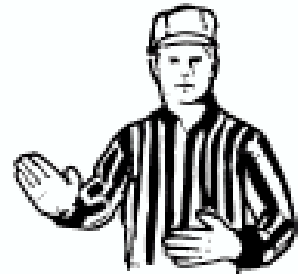
Illegal Offensive Screening –
Illegal Pick



Holding



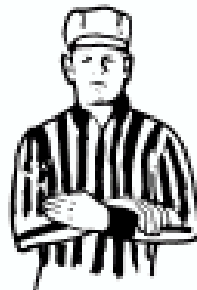
Warding Off



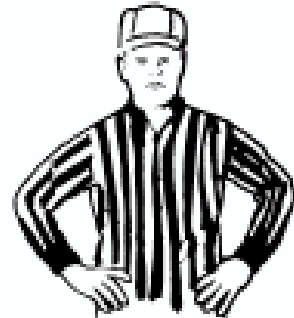
Pushing



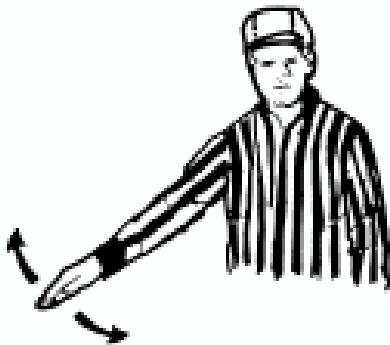
Withholding the Ball



Stalling



Offside



Crease Violation



Illegally Touching the Ball



Illegal procedure